

Takutai Kāpiti Community Assessment Panel Governance Option Diagrams

For Co-Design Working Group discussion: Community Assessment Panel governance diagram options for Takutai Kāpiti: Our Community-Led Coastal Adaptation Project.

In preparation for the co-design working group discussion on potential governance options for Takutai Kāpiti, we have drawn examples from 3 similar community-led projects and transposed them onto the Takutai Kāpiti Project. These examples are:

- Greater Wellington Regional Council's Whatiua Committee;
- Waikanae ki Uta ki Tai (Waikanae Estuary Care Group); and
- The Clifton to Tangoio Coastal Hazards Strategy 2120.

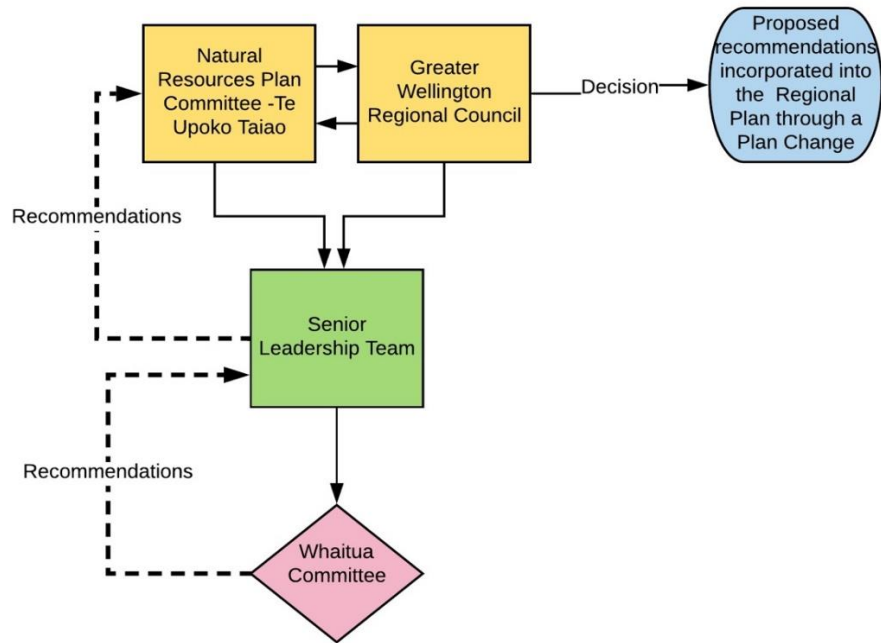
Through discussion at the 15 May 2020 co-design working group, it is anticipated pros and cons for each example will be collated, through this discussion, the working group may draw on other examples from similar processes, to assist with tailoring a governance structure for the Takutai Kāpiti process.

Takutai Kāpiti.

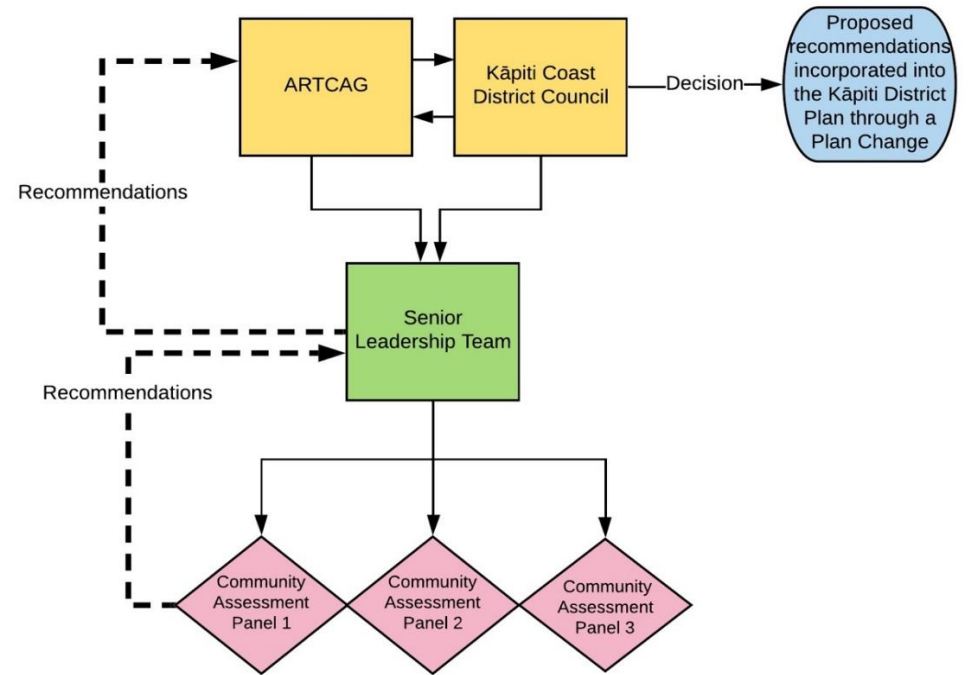
Our Community-Led Coastal Adaptation Project

Example 1: Whaitua Co-Governance

Greater Wellington Regional Council Whaitua Framework



Example: Takutai Kāpiti Framework

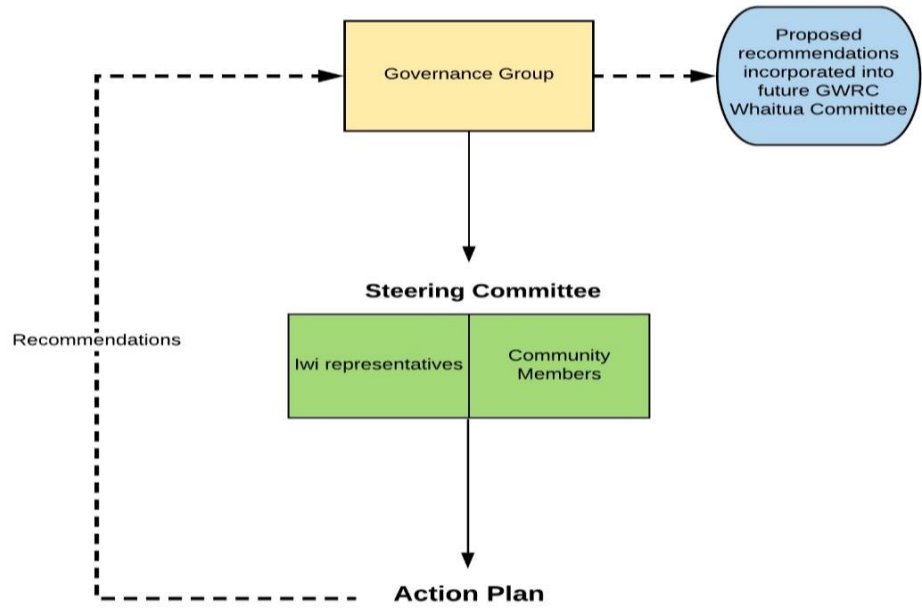


Takutai Kāpiti.

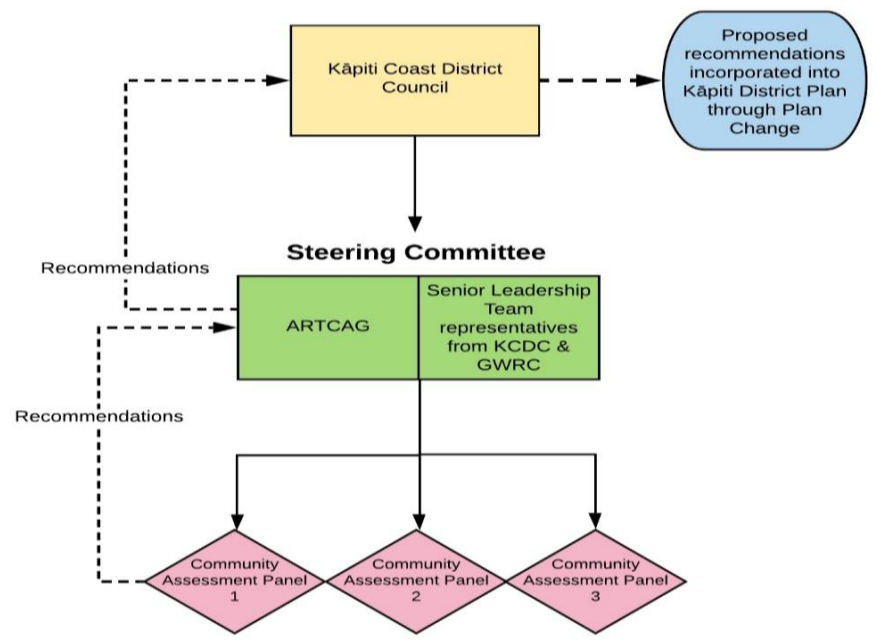
Our Community-Led Coastal Adaptation Project

Example 2: Waikanae ki Uta ki Tai (Waikanae Estuary Care Group) Framework

Waikanae ki Uta ki Ta Framework

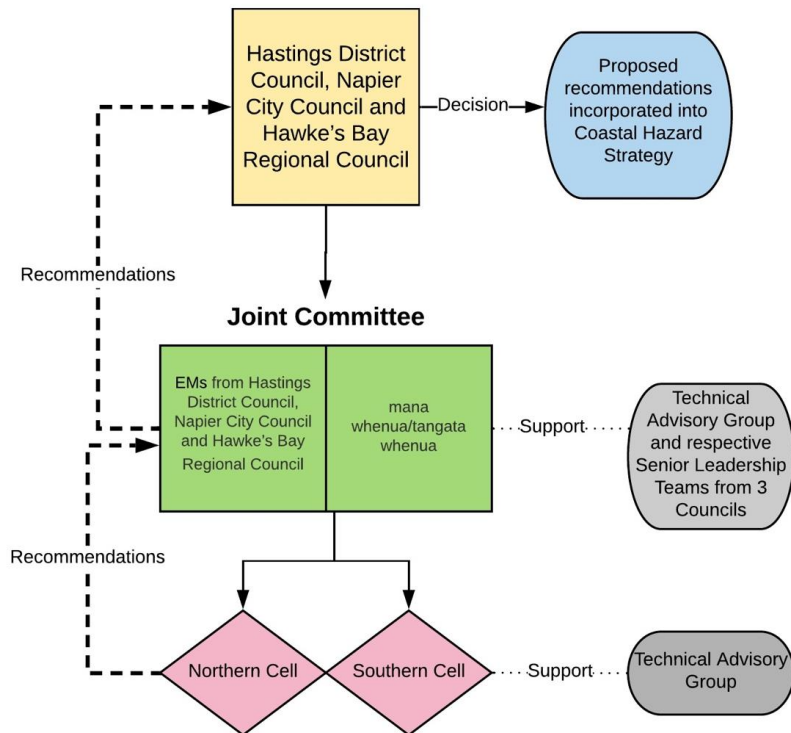


Example: Takutai Kāpiti Framework



Example 3: The Clifton to Tangoio Coastal Hazards Strategy 2120 Framework

The Clifton to Tangoio Coastal Hazards Strategy 2120 Framework



Example: Takutai Kāpiti Framework

